

OAMARU STEAM NEWS

OAMARU STEAM NEWS

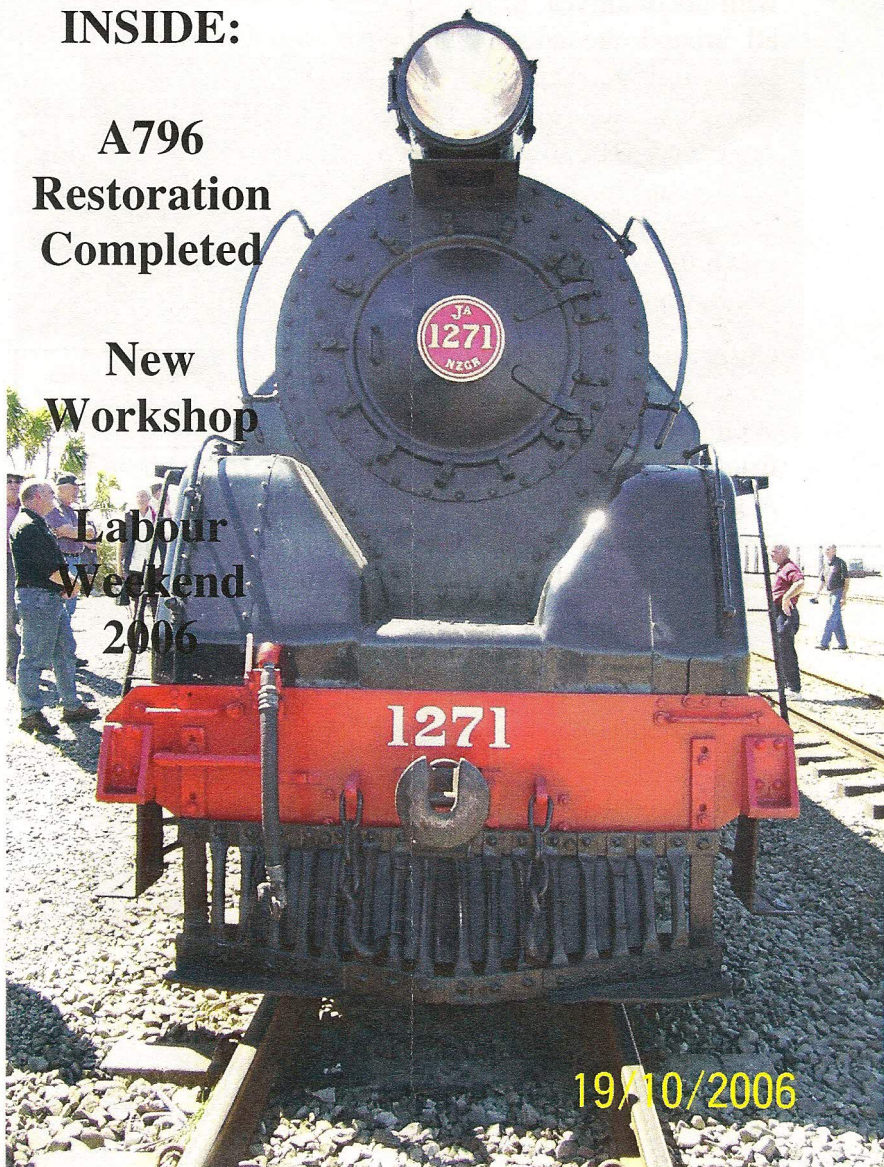
INSIDE:

A796

**Restoration
Completed**

**New
Workshop**

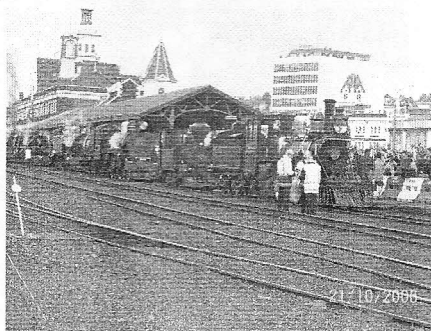
**Labour
Weekend
2006**



ISSUE ONE 2007

LABOUR WEEKEND 2006

Was a great weekend for all railway enthusiasts with locomotives from all around the country gathering at Dunedin railway station for it's centenary. The line-up of steam locomotives included W^{AB}794 from Fielding, K88 from Ashburton, D140 from



Christchurch, A67 from Dunedin, A^B663 from Wellington, J^B1236

The lineup of locomotives at Dunedin Station. Photo: George King

from Christchurch, and J^A1271 from Paekakariki. A group of 8 of us from Oamaru Steam and Rail travelled down by car for a day out. Dunedin station was absolutely packed. To start the event was the cavalcade of locomotives. The cavalcade had a commentary over the PA system with details of each locomotive as they pulled up to the station in order of their age.

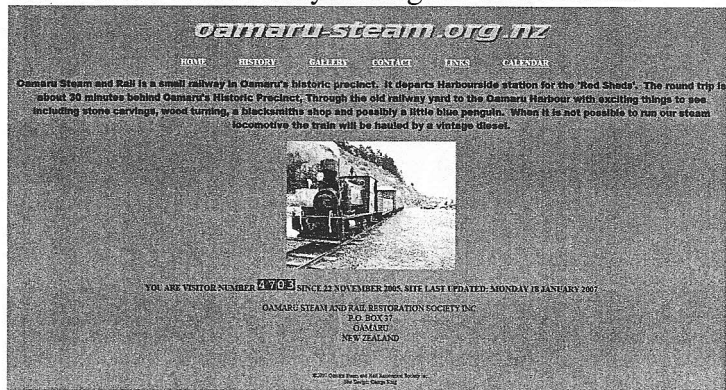
Later in the day the shuttle trains began, we took a ride on one to Sawyers Bay hauled by J^A1271. During our trip it started to rain. By the time we got back to the station it was pouring down, it was surprising how quickly people disappeared when the rain set in.

Apart from the rain it was a very enjoyable day out.

OAMARU STEAM NEWS

THE WEBSITE

The website has recently undergone an overhaul.



There is now a calendar page so you can see the upcoming running days, a new gallery page with a short video clip, and of course lots of links to other railway related websites.

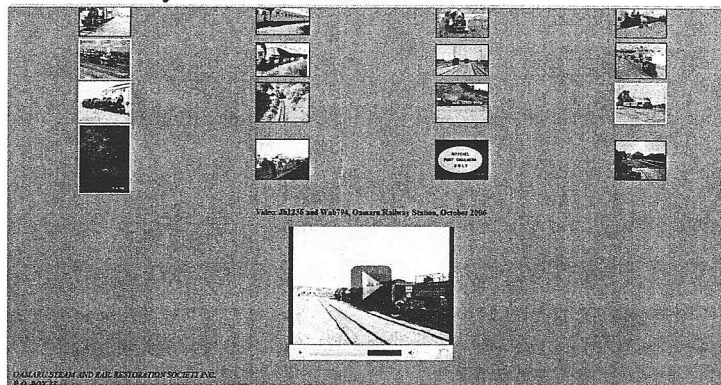
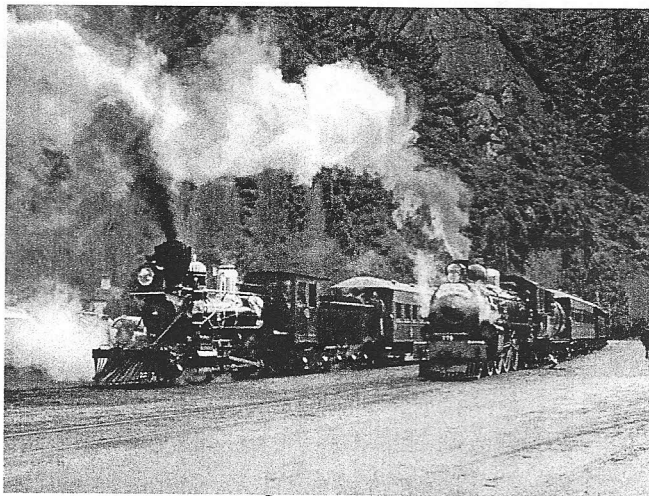
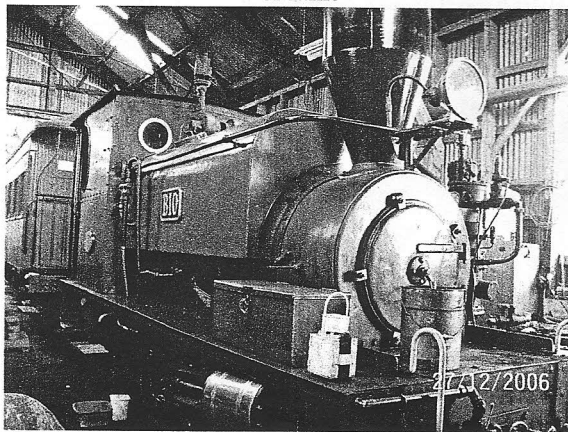


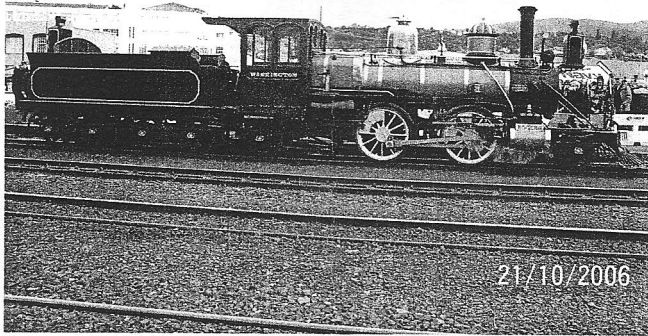
PHOTO GALLERY



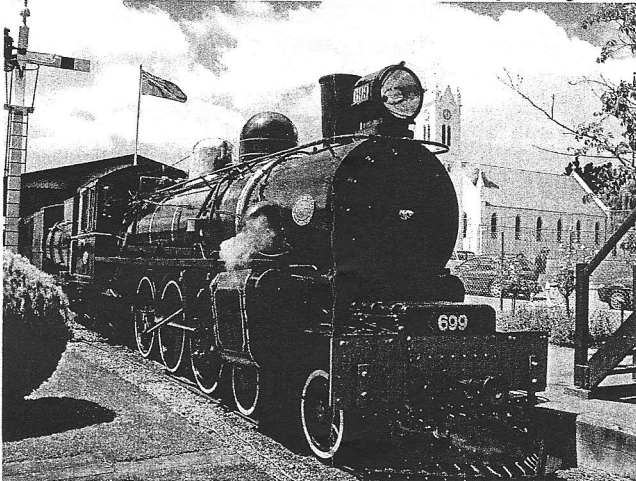
ABOVE: K92 and A^B778 at Kingston. Photo: Arthur DeMaine



ABOVE: B10 in the workshop. Photo: George King



ABOVE: K88 at Dunedin. Photo: George King



ABOVE: A^B699 at Pleasant Point. Photo Mathew Harris

CONTACT INFORMATION

**Oamaru Steam and Rail Restoration Society
Inc.**

P.O. Box 37, Oamaru, Otago 9400

(03)434-1040

General Manager: Harry Andrew
(Tel. (03)434-7525 E-Mail: clean_cut@xtra.co.nz)

President: Ormand Gerken

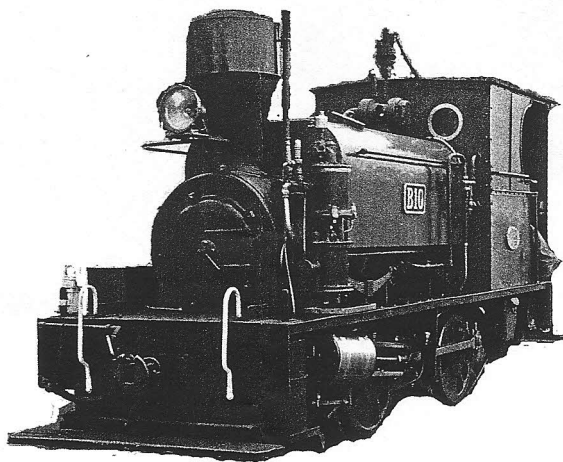
Vice President: Wayne Brunton

Secretary: Dave Clarke

Committee: Bruce Bouterway, Juliet Brunton, Arthur
DeMaine, Barbara & Mike McErlane, John Lister, George
King

Newsletter Editor: George King
(E-Mail: administrator@oamaru-steam.org.nz)

Visit us on the web
www.oamaru-steam.org.nz





WE NEED YOU

We are always looking for new members to join our team.

If you like meeting new people, like working in a fun and exciting environment, and of course, love trains, then we need you.

All we ask is at least one Sunday a month.

We have positions for Ticket Sellers, Assistant Guards, Guards, Station Masters, and you can work your way up to work on the loco. Also we are always looking for new people to join the restoration team to work on Saturdays.

If this sounds like you, and you like what you've seen in this newsletter, fill out the form over the page.

OAMARU STEAM NEWS

Complete the form below and return to Harbourside
Station, Itchen Street, Oamaru, or post it to:
Membership Secretary, Oamaru Steam and Rail, P.O.
Box 37, Oamaru.

Membership fees are as follows:

Junior (under 16yrs of age)	\$5.00
Single (16yrs of age and over)	\$15.00
Family (2 adults and 2 or more children)	\$25.00

PLEASE PRINT CLEARLY AND CROSS OUT THAT OF WHICH IS NOT
APPLICABLE

I/WE wish to apply for JUNIOR/SINGLE/FAMILY
membership of the Oamaru Steam and Rail
Restoration Society Inc.

Name: _____

Address: _____

Contact Number: _____

E-Mail: _____

I have enclosed \$ _____ Signed: _____

OFFICE USE ONLY

PROPOSER: _____

SIGNED: _____

SECONDER: _____

SIGNED: _____

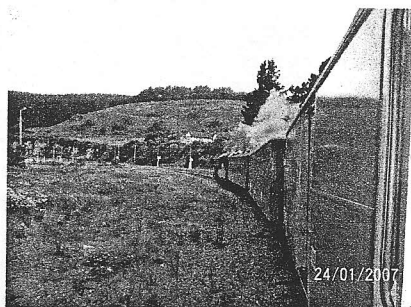
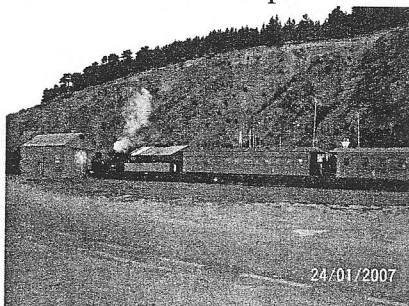
>
C
U
T
H
E
R
E
>

MG CAR CLUB CHARTER

On Wednesday Night, the 24th of January we had a charter for the Christchurch MG Car Club. The train departed Harbourside for Quarrysiding at about 8:30pm with 94 passengers on board.

Once we arrived at Quarrysiding, all the passengers made their way to the Blue Penguin Colony. Our departure from Quarrysiding was delayed by a group of four penguins which everyone wanted to see.

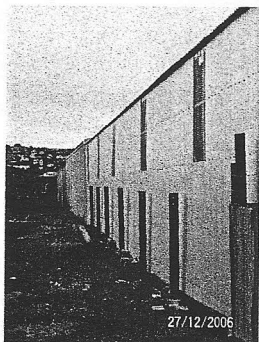
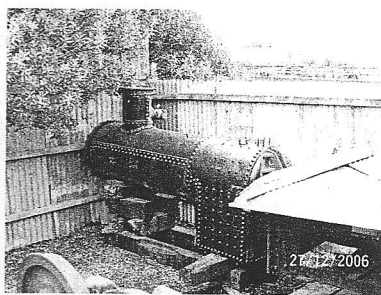
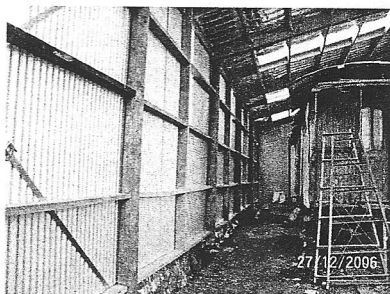
Below are some photos.



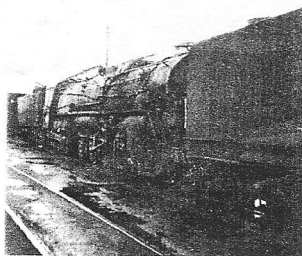
NEW WORKSHOP

The new workshop is progressing well. The roof has been completed as well as both walls. Now the end needs to be finished and the doors hung.

The Fowler (PWD535) will be housed inside once the extension is completed, and is currently getting a coat of paint.



LEFT: Outside of workshop
TOP LEFT: Inside eastern side of workshop. ABOVE RIGHT: Partially painted fowler boiler.
BELOW: ???

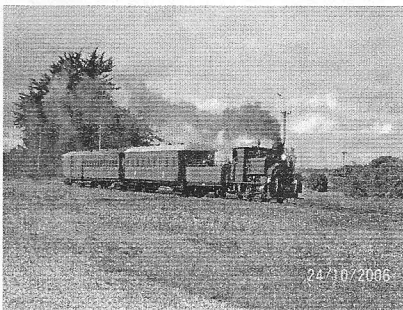
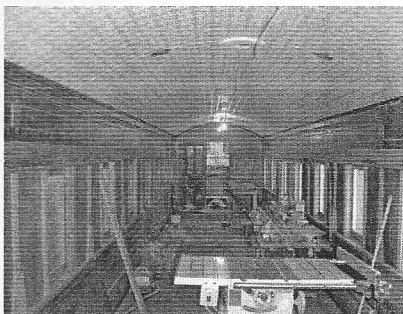


A796 RESTORATION COMPLETED

With Steam Incorporated's train from Dunedin due in a few hours with about 200 people on it, it was a last minute rush to try to get the carriage finished. There was a door catch to be fitted and the lights didn't work due to faulty wiring, also the carriage needed to be cleaned. We got all this done in time but the lights still didn't work. It was found that we had 240v bulbs when our carriage is 24v. The night time trip had to be made without lighting.

When the passengers arrived from Steam Incorporated's train, our train was at our station and ready to go.

After well over a year of restoration A796 is now being used regularly on our Sunday trains.



TOP: A796 During Restoration.
ABOVE: B10, NB1716, A796,
A1514 and F668 during a photo run.
Photos: George King

OAMARU STEAM NEWS



ABOVE: B10 being put away in the shed after a long days work. Front Cover: J^A1271 at Oamaru Railway Station on it's way to the Dunedin Railway Station Centenary. Both photos George King

NEW NEWSLETTER

YOU MAY HAVE NOTICED OUR
NEWSLETTER HAS CHANGED A LOT, WE
NOW HOPE TO PRODUCE AT LEAST FOUR
PER YEAR.

OAMARU STEAM AND RAIL DVD

AN OAMARU STEAM AND RAIL DVD IS
CURRENTLY IN PRODUCTION, SO CHECK
THE NEXT NEWSLETTER FOR MORE
DETAILS

ISSUE ONE 2007