



OAMARU STEAM NEWS

Issue 2002/1

Newsletter of the Oamaru Steam and Rail Restoration Society (Inc)

OAMARU STEAM AND RAIL RESTORATION SOCIETY INC

P.O. Box 37, Oamaru, Nth. Otago

General Manager: Harry Andrews (434.7525)

President: Ormand Gerken

Secretary: Dave Clark

Committee: Bruce Boucherway, Juliet Brunton, Jim Caldwell, Tony Cardy, Graeme Clark, Don McGrath, Bert Owen, Rusty Rusbatch, Tim Shanks.

Steam engine back on track

A small, dedicated group of Oamaru Steam and Rail Restoration Society members have totally stripped the B.10 steam engine boiler, had it inspected, carried out necessary repairs, had it rechecked, reassembled it, tested its pressure, then a certificate of compliance issued by a Marine and Industry inspector.

The loco was ready in time to run during the 2001 Oamaru Victorian Heritage Celebrations.

The Society's small blue vintage TR diesel engine, which was used as a back-up locomotive, needs axle and wheel repairs costing \$6000. They will be carried out as funds become available. The diesel engine takes only half an hour to get running, whereas the steam engine takes two-and-a-half hours to prepare.

The Society is always seeking more volunteers. Newcomers are given a simple safety and introductory course before being able to work up from station duties to become a guard's assistant, guard, station master or driver. It is a great way to meet people and become involved in the town's tourism ventures.



All O.K. now? Ormand Gerken checks it out.

COVER PHOTO:

Putting in the finishing touches. Working on the historic 1924 Hudswell Clark B.10 locomotive are (from left): Harry Andrews, Tim Shanks and Graeme Clark.

Acknowledgement: Cover photo by Darryl May and some reports sourced from the Oamaru Mail.

Oamaru's Victorian Heritage Celebrations

15th - 18th November 2001

This year's Victorian Fête on November 16-18 was described by the organisers as the best in years.

The gate takings of \$12,000 were 30 percent higher than the 2000 event. The Victorian Town at Work - an offshoot of the Oamaru Whitestone Civic Trust - runs the fête as its main fundraising project each year.

Oamaru Steam and Rail Restoration Society was busy carrying about 500

passengers during the course of the fête. Some people from nearly every train trip took the option of boarding an army-style vehicle near the harbour siding and going up to the Cape Wanbrow military installations.

The effort by Society members over the Heritage weekend raised a grand total of nearly \$2000 - a worthwhile contribution to the maintenance and running of the Oamaru Steam Railway!



Dressed for the part! Staffing the ticket office during the Victorian Heritage Celebrations were (l to r) Juliet Brunton, Tony Cardy and Noeline Whittaker.

PHOTO ROUND UP

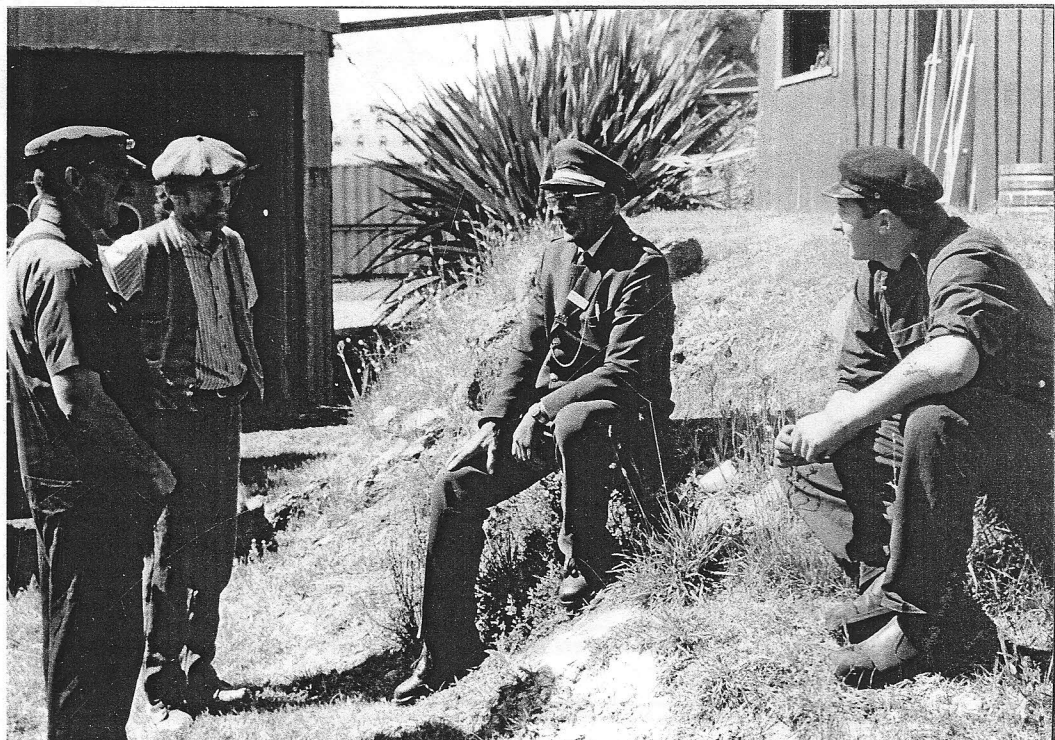


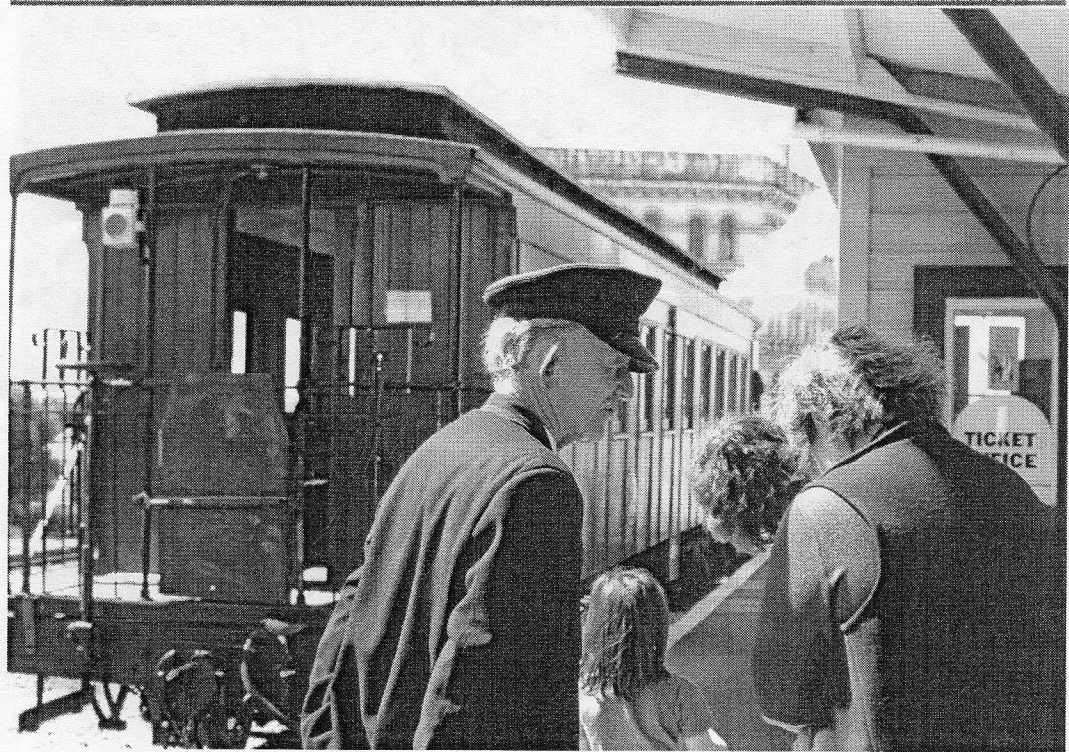
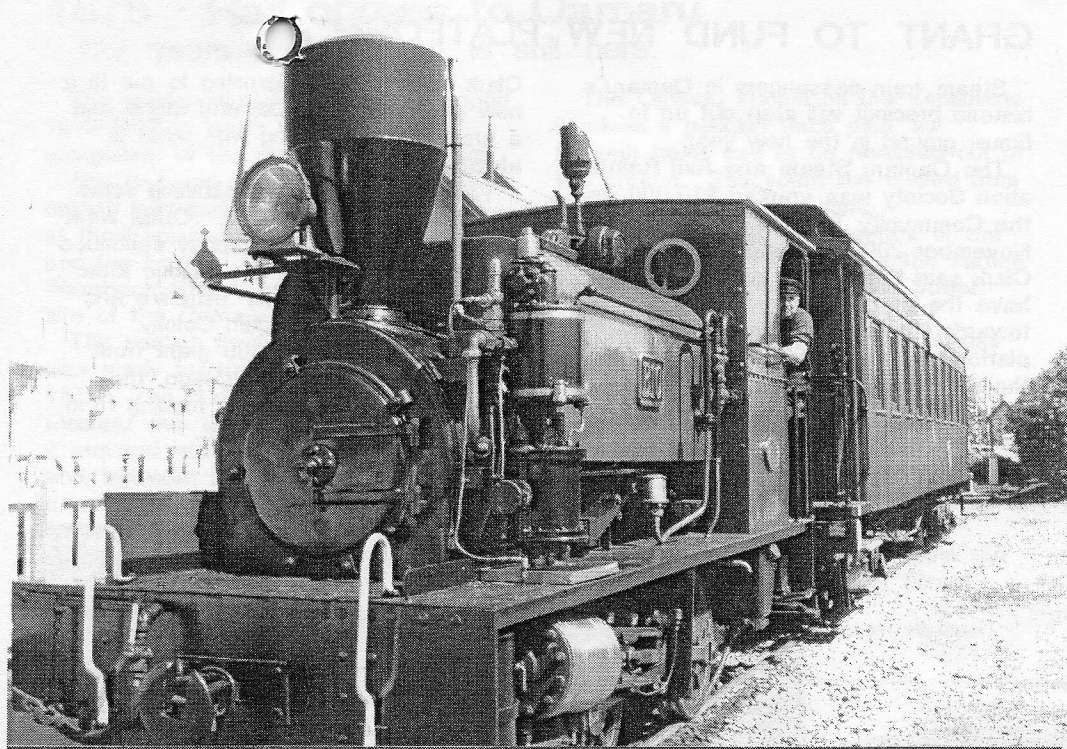
Left (top): The end of the line. Approaching Quarry Siding.

Left (bottom): Taking a break. Train crew members Harry Andrews, Les Boaden and Tim Shanks chat to woodturner Bill Blair (2nd l.) at the Red Sheds.

Right (top): Ready for the off! The 1924 Hudswell Clark about to leave Harbourside Station.

Right (bottom): Lending a helping hand. Long serving Society member Don McGrath assists a family about to board.





GRANT TO FUND NEW PLATFORM

Steam train passengers in Oamaru's historic precinct will step out on to firmer ground in the new year.

The Oamaru Steam and Rail Restoration Society was granted \$10,000 from the Community Trust of Otago on 13 November 2001. Spokesperson Graeme Clark said the society was "thrilled" to have the grant approved. It would go towards the construction of a new platform at the Quarry Siding, where the steam train stopped to offload passengers at the Red Sheds near the Oamaru Harbour.

"At the moment, people are just disembarking on to temporary steps," Mr

Clark said. "We're planning to put in a new platform, using Oamaru stone and a grass top in keeping with what is already there."

The society was also planning some track realignment, he said. Other work would continue as the society continued to build its links with the historic area, the Red Sheds artisans' initiative and the Oamaru Blue Penguin Colony.

As well as the \$10,000 grant from the Community Trust of Otago, the society was also receiving funding from the Oamaru Licensing Trust.

(Oamaru Mail)

Arriving at the Quarry Siding. The new platform will be installed at the far side of the track to assist passengers alighting at the site of the Red Sheds.

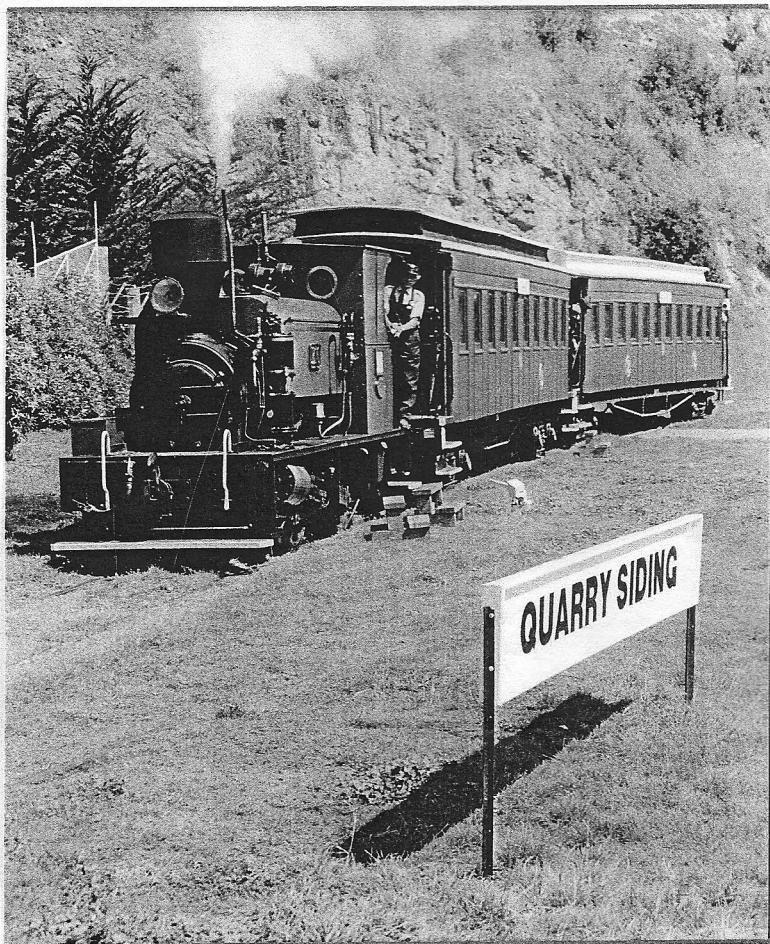


Photo by Jason Brunton

1875 - Rail comes to Oamaru

- 127 years later, steam is still here.

The predominant feature of the period 1873-1878 in North Otago was the completion of the main railway system.

The first sod of the Waitaki-Moeraki railway was turned on 10 March 1873 at the Esplanade between Tyne Street and the beach. There, at the foot of Wansbeck Street, had been fixed the site of the Oamaru station.

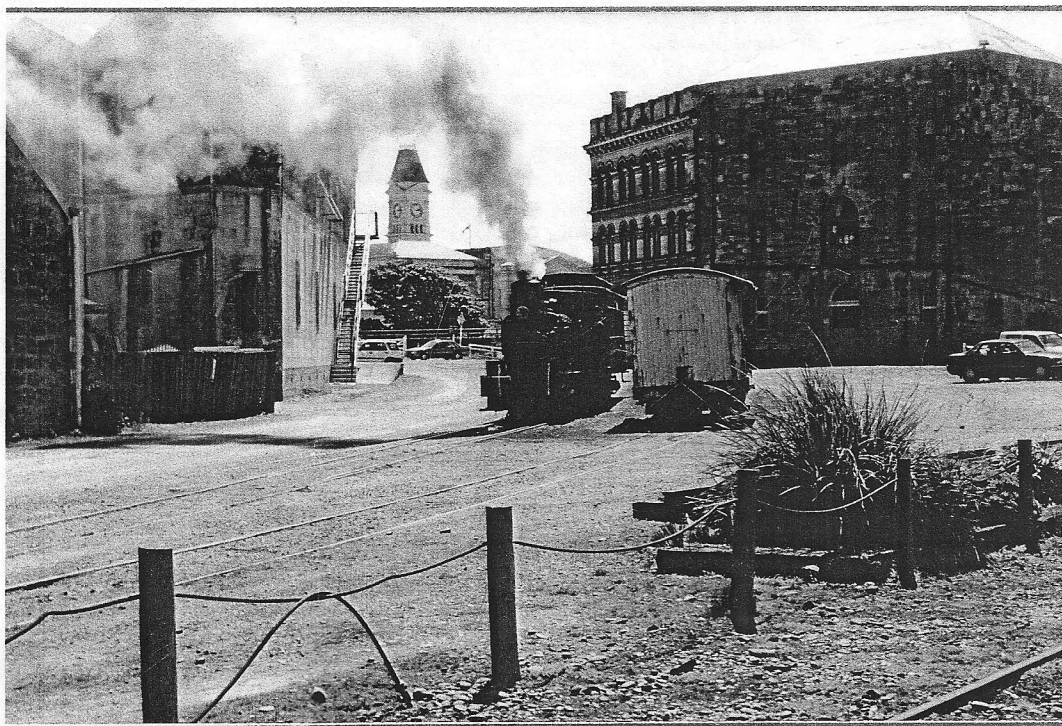
The section from Waitaki to Oamaru was ready for traffic on 25 September 1875. The main line south from Oamaru was not so easy to construct; it required heavy embankments, cuttings and, between Herbert and Wairanakarua, a tunnel nearly 900 feet in length. The line was finally opened to Moeraki Junction (Hillgrove) on 4 November 1876. Complete communication between Dunedin and Christchurch was established on 6 September 1878.

The Oamaru station on the Esplanade involved a peculiar track plan, as through trains had to be reversed out of the station. The south line curved from the Thames Street crossing.

The inconvenient arrangement of the railway led to the removal of the station to its present site on Humber Street. The change necessitated the construction of a curving bridge across the lagoon. The new station was opened on 29 October 1900.

The wheel has now turned full circle. Whereas the future of passenger services on the main line is in doubt, the Oamaru Steam and Rail Restoration Society has made use of the discontinued southbound track from the site of the original Wansbeck Street station.

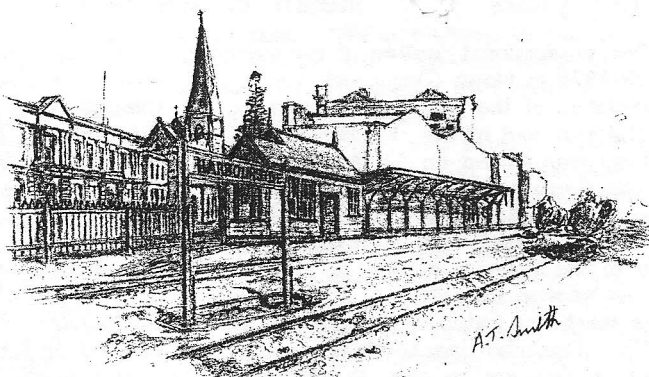
(With acknowledgement to 'The History of North Otago').



Flashback? It could be over a hundred years ago but, in fact, it's the Oamaru Steam and Rail Restoration Society's 1924 Hudswell Clark B10 steaming round the bend past Victorian warehouses on the old south line in 2001.

OAMARU STEAM AND RAIL RESTORATION SOCIETY INC

The objectives of the Society are for the restoration and operation of Steam and Railway equipment for the enjoyment of its members and the general public



Born out of the imagination and enthusiasm of a stroll through the children's playground of the Oamaru Gardens by the late Doug Ireland, is what is now known as the Oamaru Steam and Rail Restoration Society.

Having the engineering adrenalin in his veins, he was propelled by the possibilities of having the small Fowler Steam Engine, which sat on two stubbed lengths of railway iron and concrete pad in the middle of the playing area, removed to a shed located in the quarry area where it would be dismantled and restored back to working potential.

The magnitude of the task in hand was such that the means of financing the project was uppermost in our minds. So it was decided to explore the ability of having a tourist attraction such as ours as an asset to the community.

In 1985, Oamaru Steam and Rail took over the Fowler to restore but the boiler was beyond repair and the cost of a new boiler was beyond the financial resources of the Society.

We were fortunate to be the recipients of a fully restored B10 engine from Pukeuri Freezing Works with the condition that it be housed securely at all times. This asset along with several rakes of rolling stock is strong witness to what we see as an encouraging future. Given the uniqueness of the location from Ichen Street to the Quarry we are becoming a key part of the development of what is to become Oamaru's envisaged future tourism and employment.

Oamaru needs input like ours. We need your input - become a member. Complete the membership application and return it to the Secretary, P.O. Box 37, Oamaru.

MEMBERSHIP APPLICATION

I/We Wish to apply for membership of the Society and to abide by the rules of the Society and pay the current subscription of \$10.00 (families \$15.00).

Name(s)

Address

. Phone

Signed Date

(Proposer Secondar)